



# Data Sets and Collaboration

November 16, 2022

# Sampling of Data Sets

## Road use

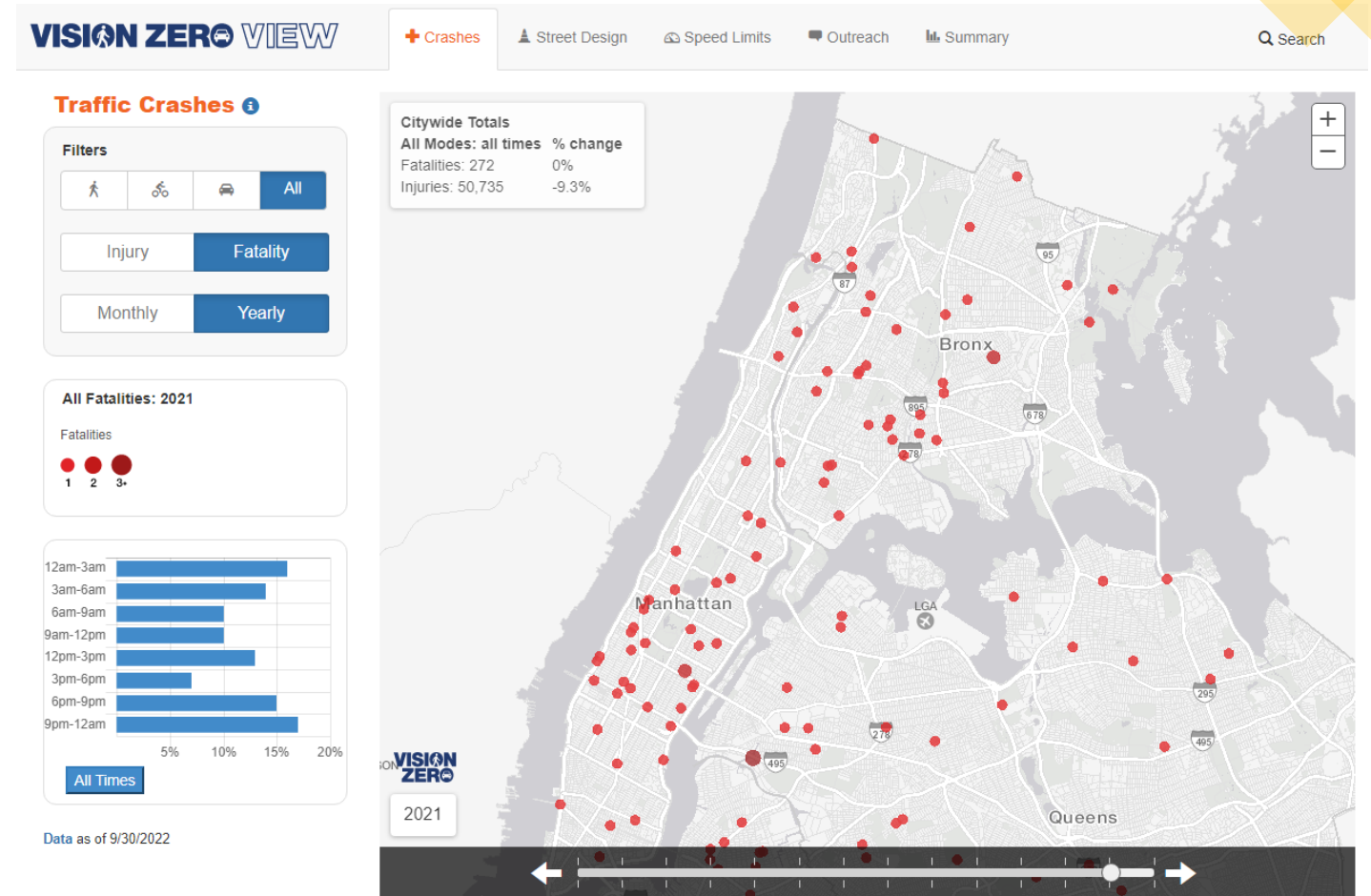
- DOF [Open Parking and Camera Violations](#)
- NYPD [Moving violations](#)
- TLC [Industry Trip Data](#)
- DCAS Fleet Telematics
- DOHMH [Community Health Survey](#)
- DOT [Citywide Mobility Survey](#)



# Sampling of Data Sets

## Crashes and Injuries

- [Vision Zero View Interactive map](#)
- NYPD [Motor Vehicle Collisions – Crashes](#)
- NYPD [Motor Vehicle Collisions – Vehicles](#)
- NYPD [Motor Vehicle Collisions – Person](#)
- NYPD [Traffic Safety Forum](#)
- TLC [Crash Data Summary](#)
- DOHMH Vital Statistics
- DCAS Fleet Crashes



# Sampling of Data Sets

## Priority Geographies

- [Priority Corridors](#)
- [Priority Zone or Areas](#)
- [Priority Intersections](#)
- [Bike Priority Areas](#)

## Road projects

- DOT – Safety Improvement Projects ([intersections/corridor](#))
- DOT – [Signal Timing/25MPH Signal Retiming](#)
- [Speed Humps](#), [Leading Pedestrian Intervals](#), [Turn Traffic Calming](#)





# NYC Open Data

**NYC** OpenData

[Home](#)

[Data](#)

[About](#) ▾

[Learn](#) ▾

[Contact Us](#)

[Sign In](#)

## Open Data for All New Yorkers

Open Data is free public data published by New York City agencies and other partners. **Share your work during Open Data Week 2023** or **sign up for the NYC Open Data mailing list** to learn about training opportunities and upcoming events.

Search Open Data for things like 311, Buildings, Trees



Learn about the next decade of NYC Open Data, and read our [2022 Report](#)

<https://opendata.cityofnewyork.us/>

**BETA** Introducing our new data shaping and exploration experience: Filter, group, aggregate, and more!

[Try it now](#)

[Learn more](#)

## Motor Vehicle Collisions - Crashes

Public Safety

[View Data](#)

[Visualize](#) [v](#)

[Export](#)

[API](#)

[...](#)

The Motor Vehicle Collisions crash table contains details on the crash event. Each row represents a crash event. The Motor Vehicle Collisions data tables contain information from all police reported motor vehicle collisions in NYC. The police report (MV104-AN) is required to be filled out for collisions where someone is injured or killed, or where there is at least \$1000 worth

[More](#)

**Updated**

October 27, 2022

**Data Provided by**

Police Department (NYPD)

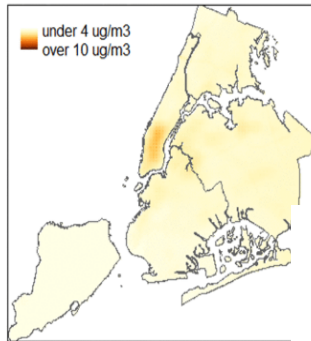
# Environment and Health Data Portal

## The biggest air quality changes were in Manhattan's central business district.

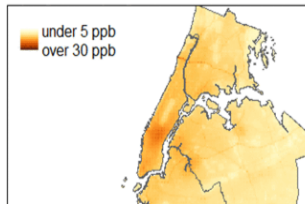
With many New Yorkers staying home, activity in the CBD fell drastically. Explore the changes in the maps below.

Our land-use regression models incorporate data from nearly 100 air quality monitoring sites. [For more information, visit NYCCAS.](#)

**PM2.5**  
Spring 2019 Spring 2020



**NO2**  
Spring 2019 Spring 2020



### Data Explorer

Get data sets on important environment and health topics for NYC. View maps, charts, and more.

Select a topic to view data:

- Air Quality
- Climate
- Housing
- Health equity
- Active design / Transportation
- Health outcomes
- Child health
- Pests and pesticides
- Food and drink
- All topics

View these

### Featured datasets:

Air quality: PM2.5

Evictions

Poverty

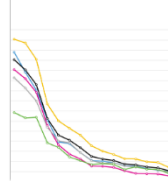
Child asthma

Heat vulnerability

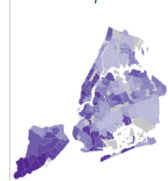
Violence

### What's inside:

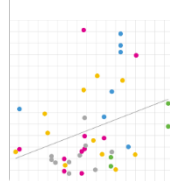
Get trends...



...maps...



...and more!



Can't find what you're looking for? Browse an index of all our datasets.

## What's the environment?

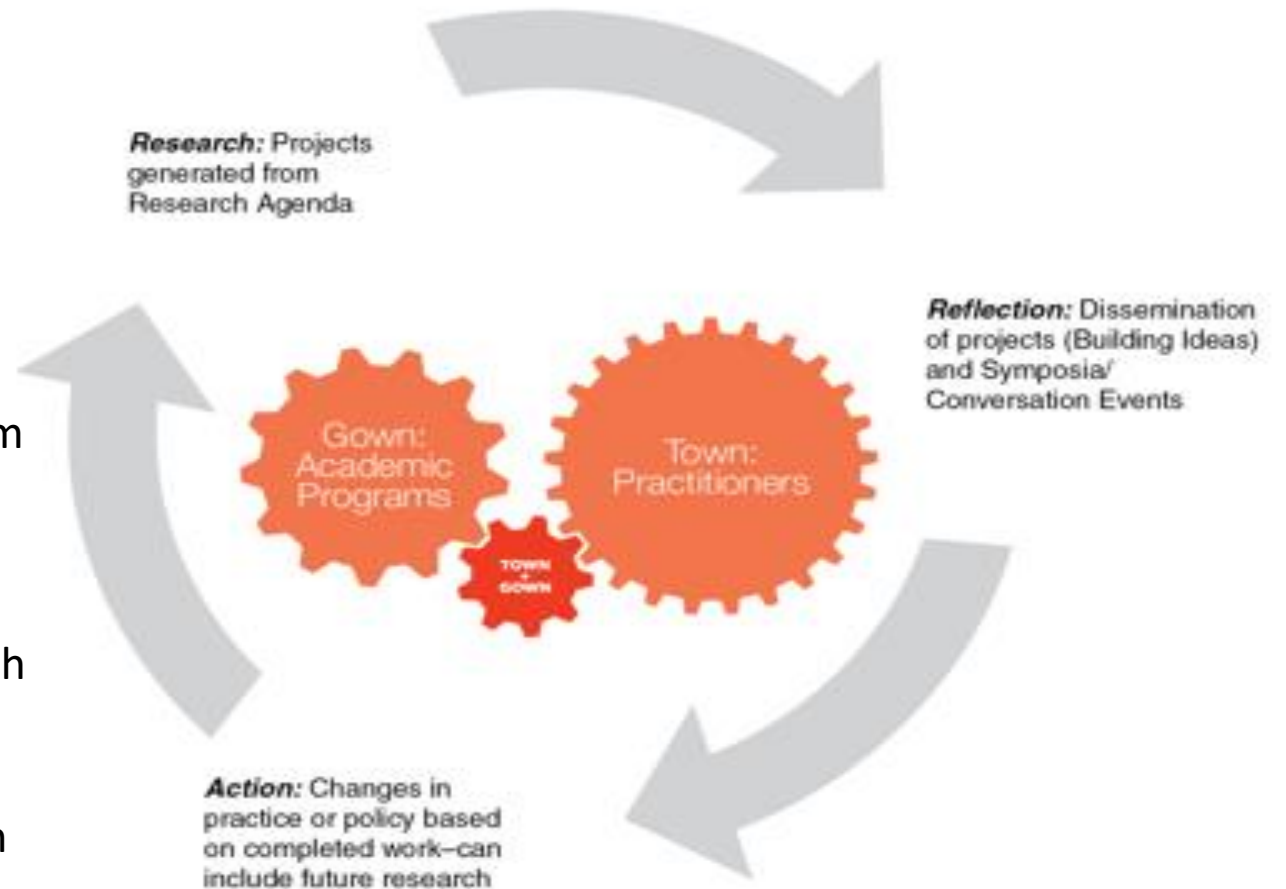
It's everything around us: our air and water, the climate, our city's buildings and streets, and the society that we live in. It shapes our lives and our health.

We collect data from many different sources, and we put them together in different ways to show **how environments affect health**. Explore how here.

### Data Stories



- Brings academics and practitioners together on Built Environment research within an action research framework
- Transfers and translates applied research results to inform and support changes in practices and policies
- **Two mechanisms:**
  1. student-directed experiential learning-based research
  2. agency-funded faculty-directed research
- Partnered with the Vision Zero Task Force on all Research on the Road Events!



**Terri Matthews, Director, Town+Gown**

[matthewte@ddc.nyc.gov](mailto:matthewte@ddc.nyc.gov)

Program Webpage: <https://www1.nyc.gov/site/ddc/about/town-gown.page>



## Transportation-related experiential learning projects within Town+Gown



### [Transportation Monitoring](#) (Management of Technology Capstone, Spring 2021)



Expanding upon Transportation Monitoring project insights



### [Urban Subsurface Infrastructure Disruption Analysis \(Location-based Analysis Method for Priority \(LAMP\)\)](#) (Management of Technology Capstone, Fall 2021)

## Transportation-related (and other) faculty-directed projects via Town+Gown Master Contracts

[Two Agency-Funded Faculty Directed Master Contract Options](#) with [examples of applied research conducted](#).

# Acknowledgments

Seth Hostetter, NYC DOT

Rob Viola, NYC DOT

Julia Kite-Laidlaw, NYC DOT

Terri Matthews, NYC DDC

Shawn Alsop, NYPD

Eric Richardson, NYC DCAS

Nathaniel Koszer, NYC DCAS

James DiGiovanni, NYC TLC

Andrea Hernandez, NYC Mayor's Office of Operations

Dara Yen, NYC Mayor's Office of Operations

Geraldine Sweeney, NYC Mayor's Office of Operations

Fiona Peach, NYC Mayor's Office Of Operations